

***THOMSON***

# Pocket Switched Networks, Haggle, and what's next

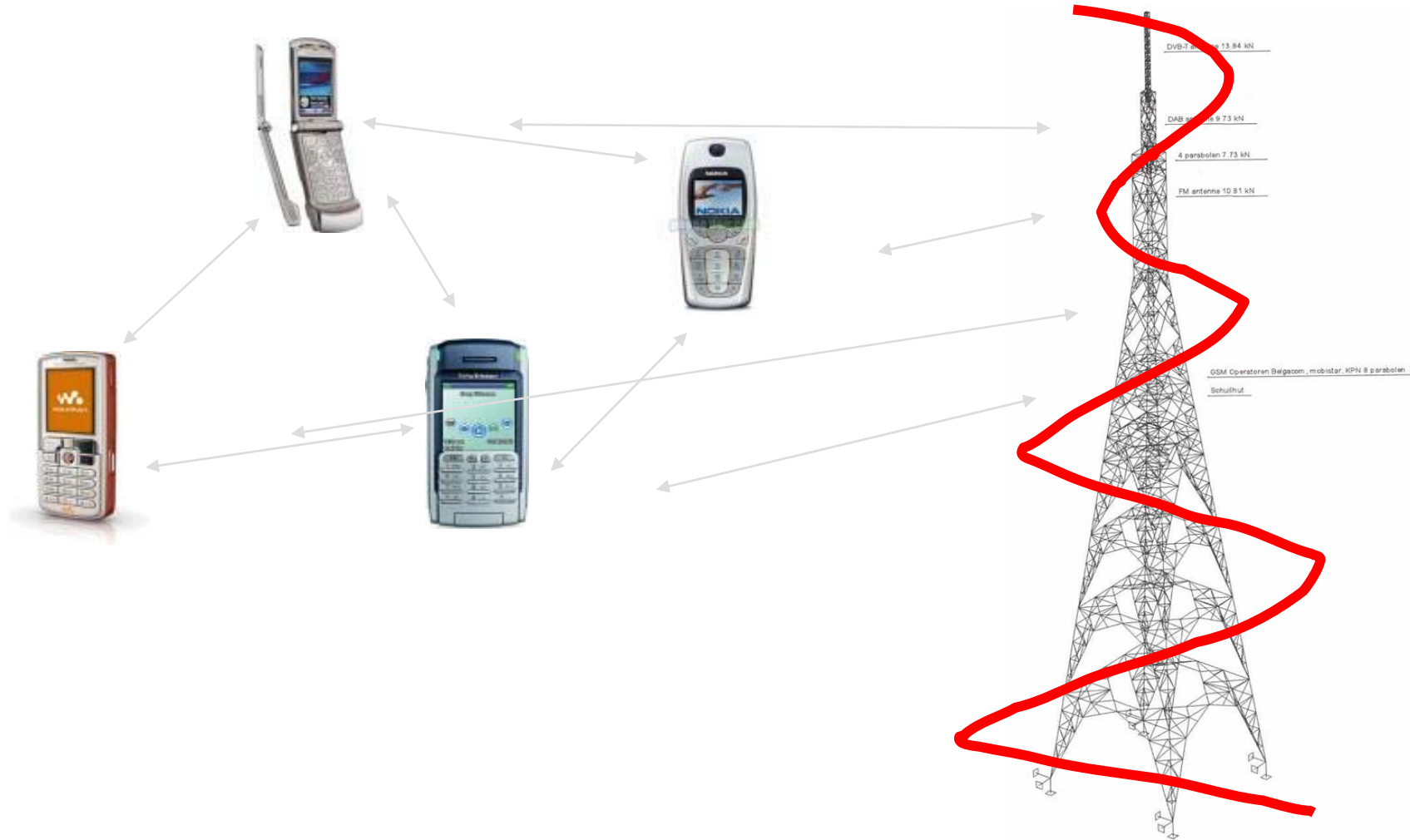
NetArch2009, Monte Verita, Ascona

Martin May

*[martin.may@thomson.net](mailto:martin.may@thomson.net)*

***THOMSON***

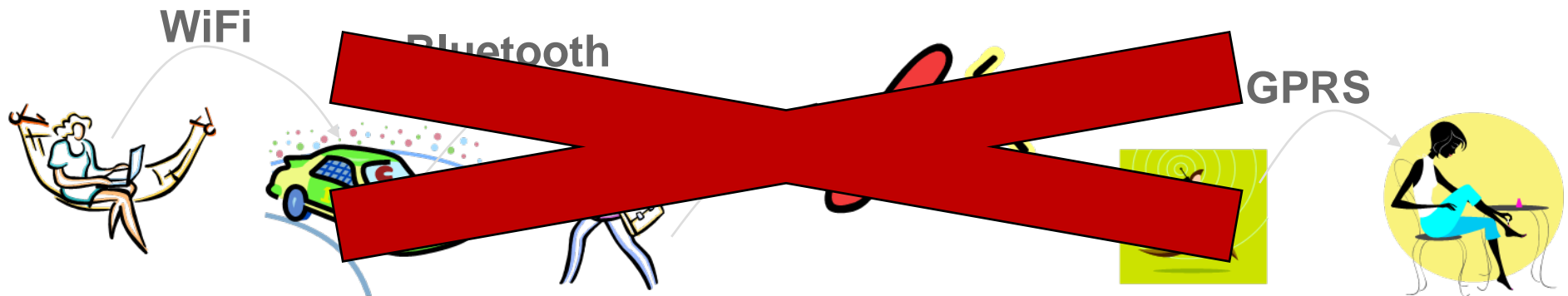
# Infrastructure based services



# Pocket Switched Networks

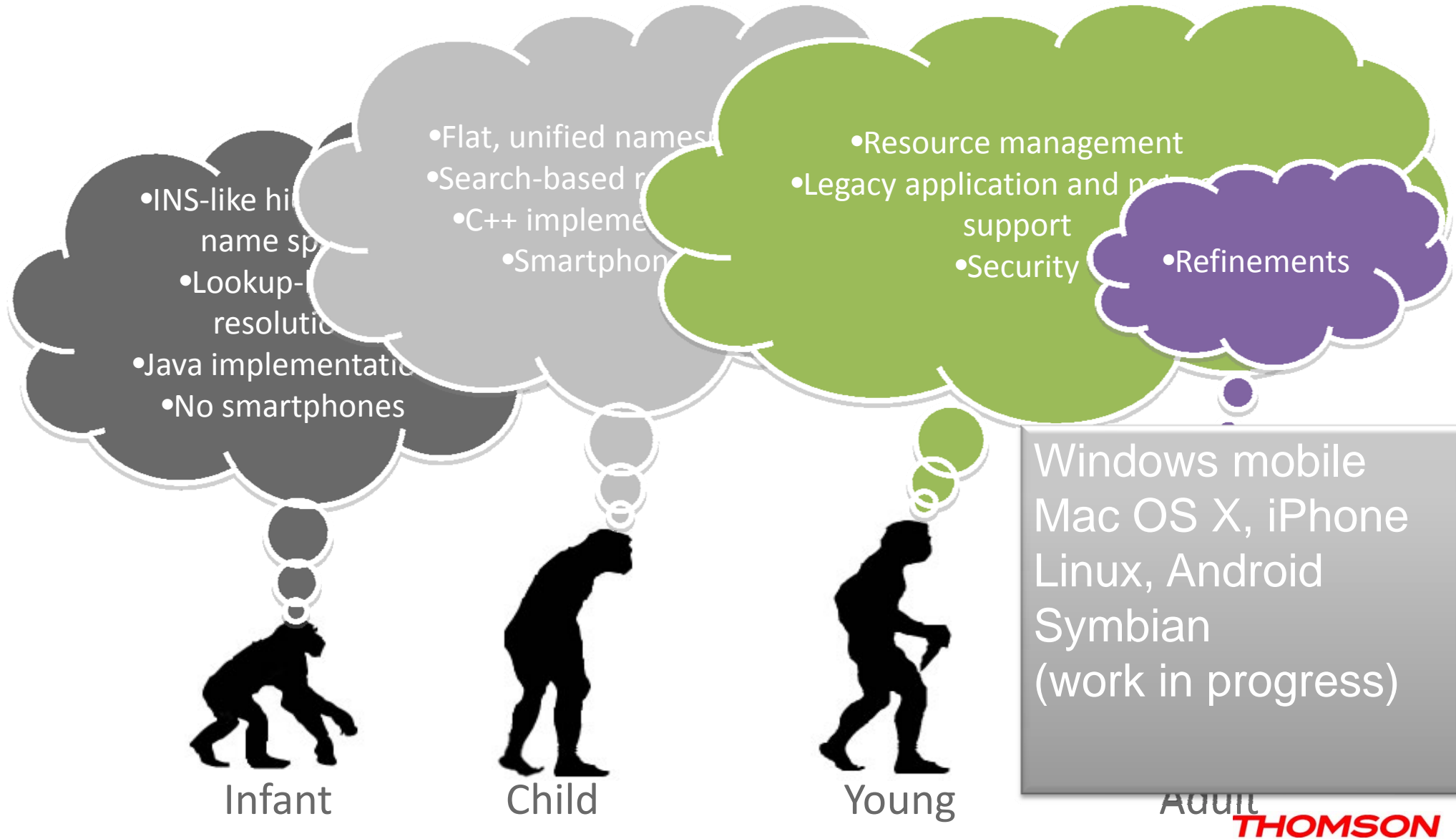
---

- Any network capable device can store and forward content
- Exchange content using device/user mobility
- Opportunistic use of communication technologies
- Local peer-to-peer communication
- Access to Internet legacy services through gateways



# Evolution of Hagggle

---

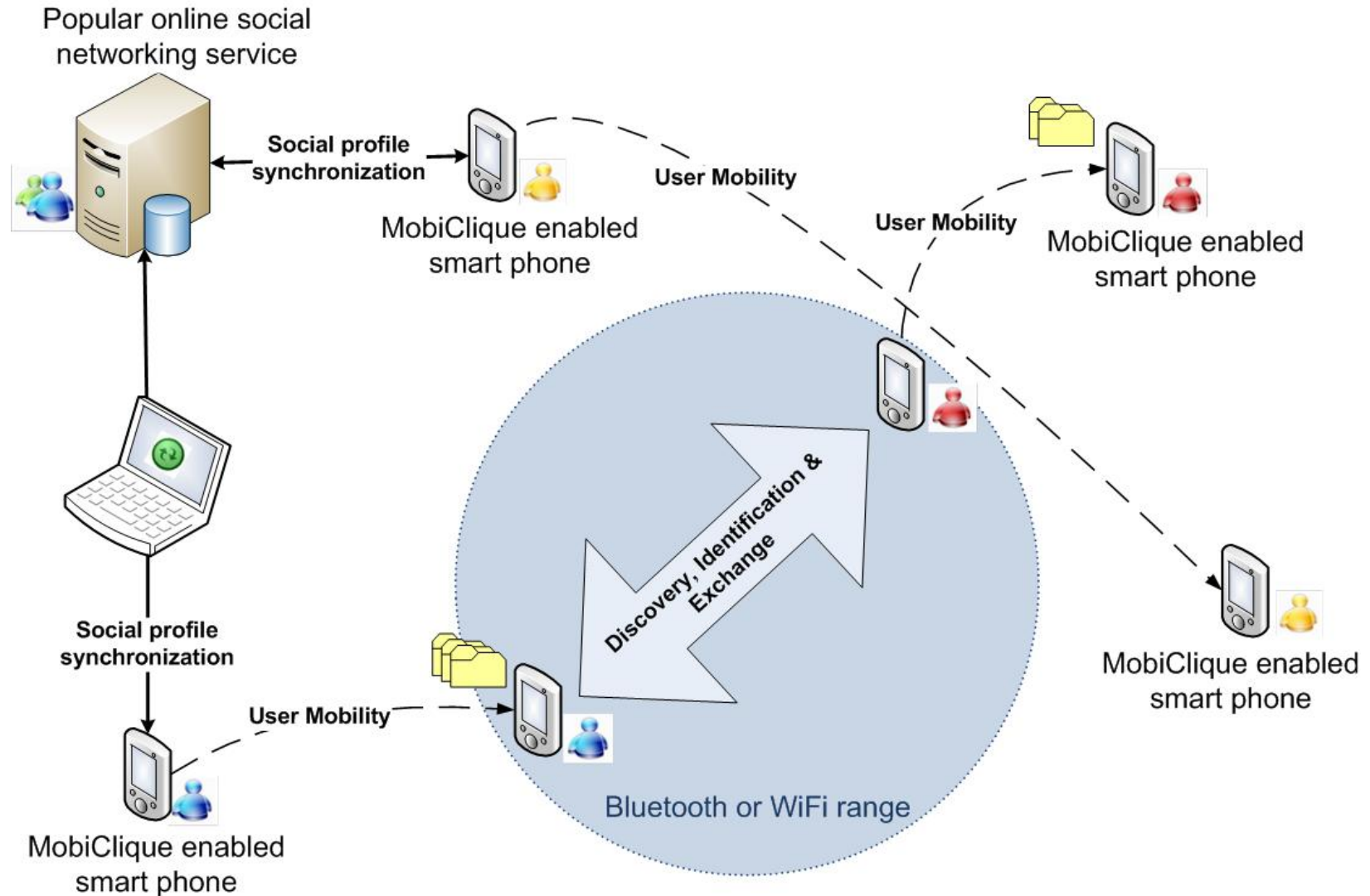


# What has changed since the beginning of Hagggle?

---


- **No more focus on end-to-end communication**
  - No routing between devices
- **Application is Content Dissemination**
  - People share content (like in P2P)
  - Similar to PodNet
- **Social networking on Hagggle**
  - Leverage existing online social networks to bootstrap the system
  - Completely decentralized operation in ad hoc mode
  - Social profiles exchanged on each contact to build and maintain the overlay

# MobiClique (cont.)



# MobiClique Applications (cont.)

MobiClique 11:40




**Anna-Kaisa Pietilainen**

Status *foo*

Location

11:40 PM: New group Peer to peer dete...  
11:40 PM: New contact: Test Dummy1  
11:37 PM: Welcome Anna-Kaisa Pietilainen


Profile Groups Contacts Messages

Show  Menu

MobiClique 11:41

- [I] Test Dummy1
- [F?] Carrera Marianna


Profile Groups Contacts Messages

Show  Menu

MobiClique 11:40

- [M] Mobiclique Discussion
- [M] Mobiclique Test
- [?] Peer to peer - new
- [M] Opportunistic communications

Profile Groups Contacts Messages


Show  Menu

MobiClique 11:43

[1/2] hello [in Mobiclique Test]

- Test Dummy1: bonjour
- Me: world

Profile Groups Contacts Messages

Show  Menu

# Next steps

---

- **Final release of Hagggle reference implementation**
- **Release of the Symbian version of Hagggle**
  - Integration of security features
- **Interaction with the legacy Internet**
- **Getting social**
  - Theoretical analysis of social graphs and navigation in mobile social graphs
- **Solve problems with wireless interfaces**
  - Energy
  - BT scanning and detection
  - ...
- **Run for new funding in fall 2009**
  - From ad hoc networking to ad hoc servicing



# References

---

- <http://www.hagggleproject.org/>
- <http://podnet.ee.ethz.ch/>
- <http://www.thlab.net>